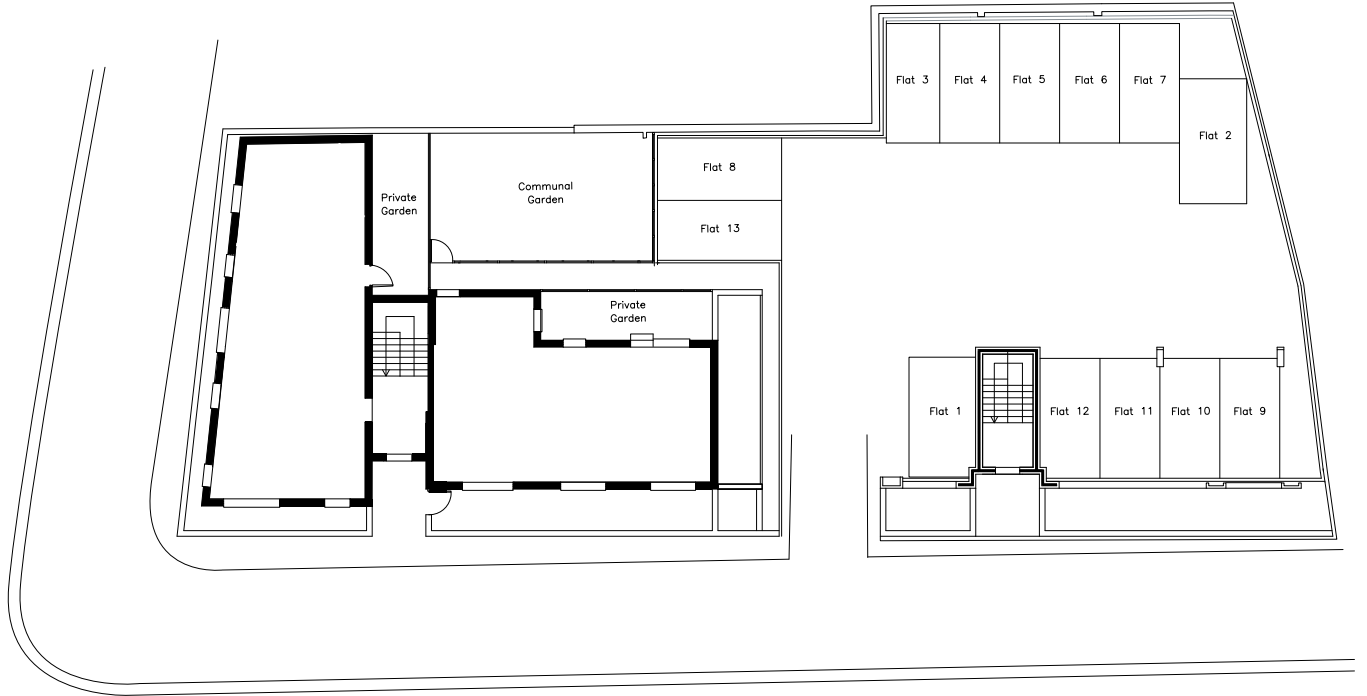
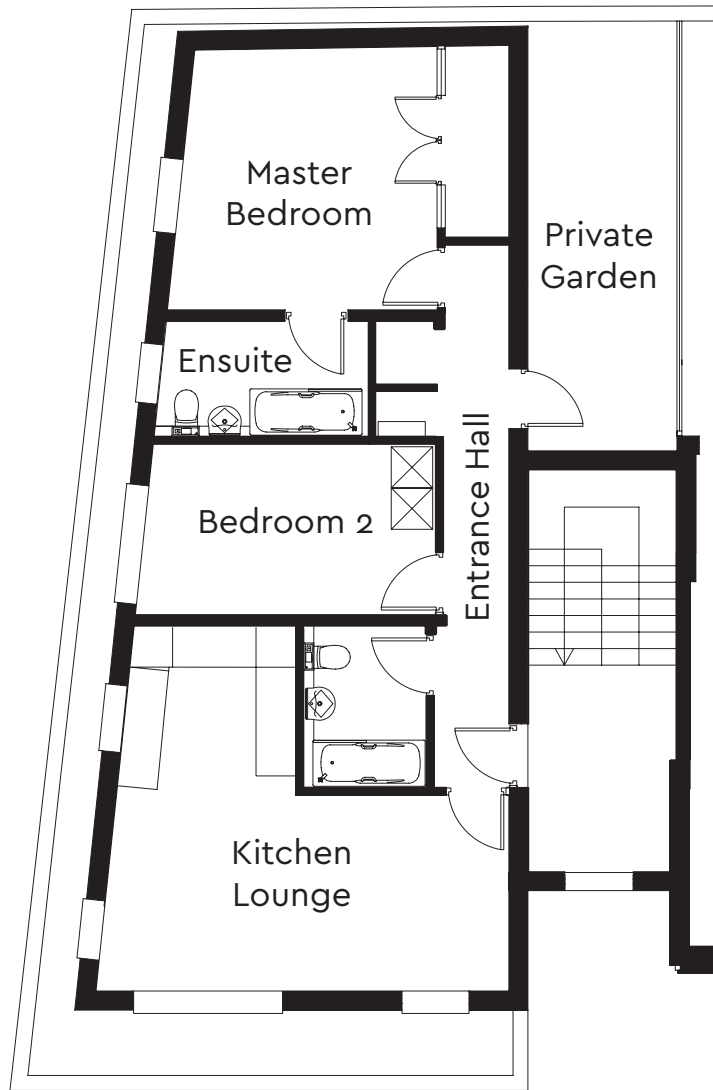


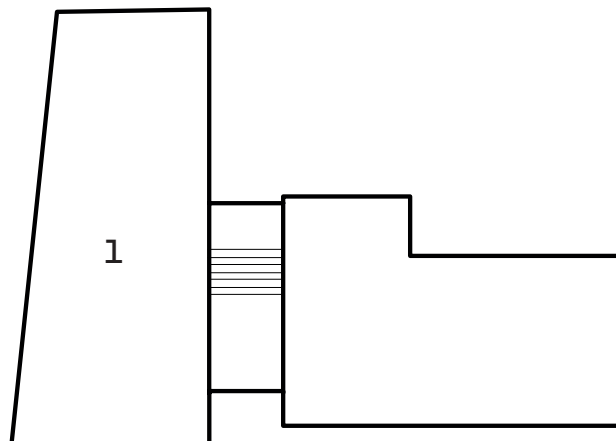
# SITE PLAN



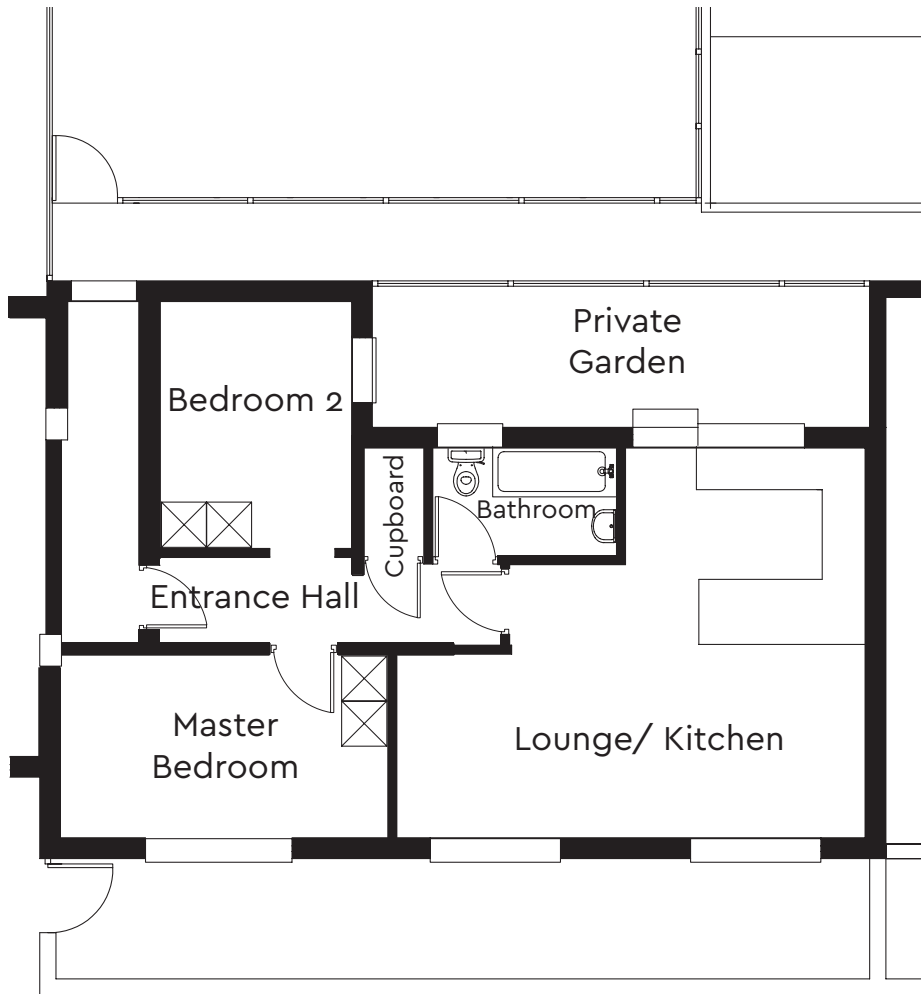
# GROUND FLOOR FLAT 1



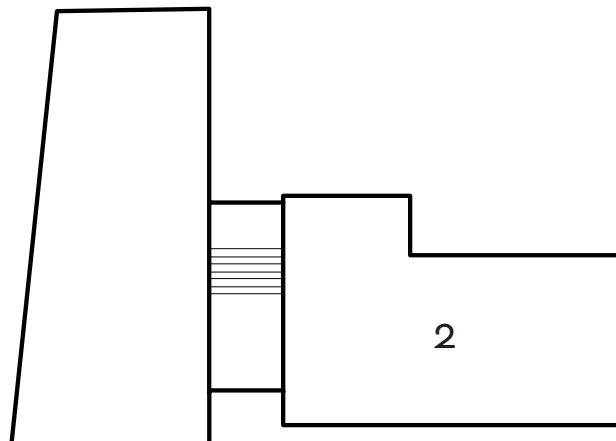
Master bedroom	3.92m x 4.07m	12' 9 x 13' 35
Ensuite	3.23m x 1.73m	10' 6 x 5' 7
Bedroom 2	4.52m x 2.58m	14' 8 x 8' 5
Kitchen/Lounge	6.20m x 5.50m	20' 3 x 18' 0



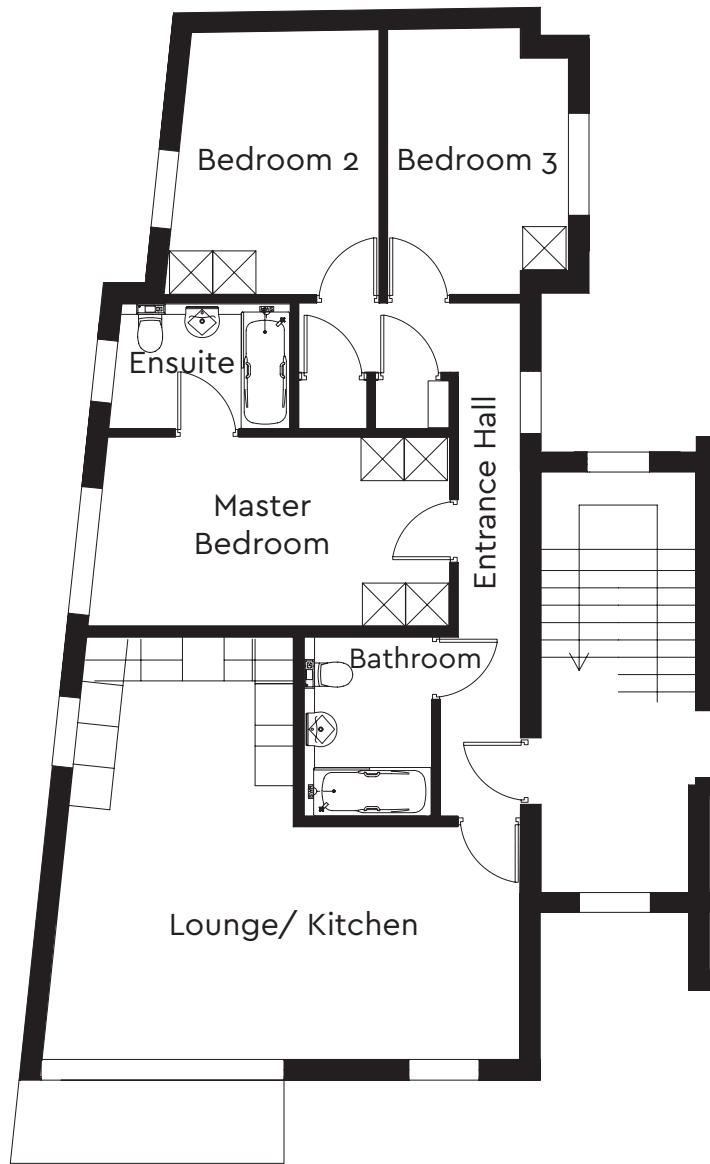
# GROUND FLOOR FLAT 2



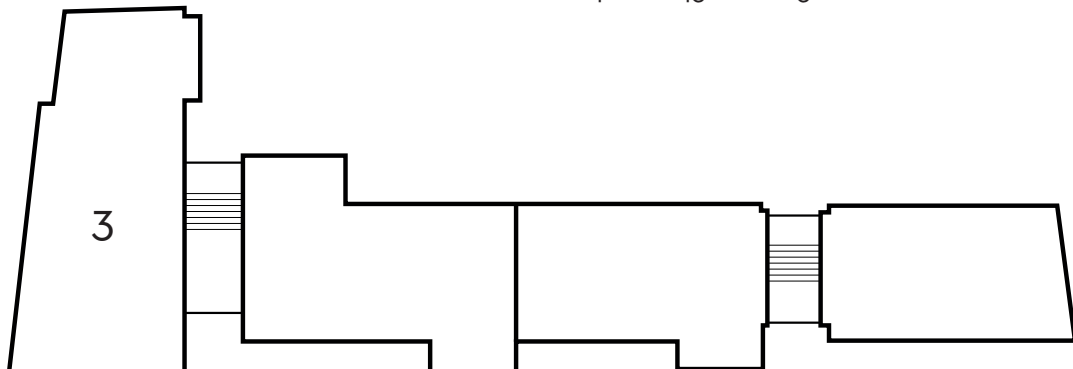
Master bedroom	4.52m x 2.52m	14' 8 x 8' 26
Bedroom 2	2.64m x 3.41m	8' 6 x 11' 2
Kitchen/Lounge	6.47m x 5.43m	21' 2 x 17' 8
Bathroom	2.53m x 1.48m	8' 3 x 4' 8



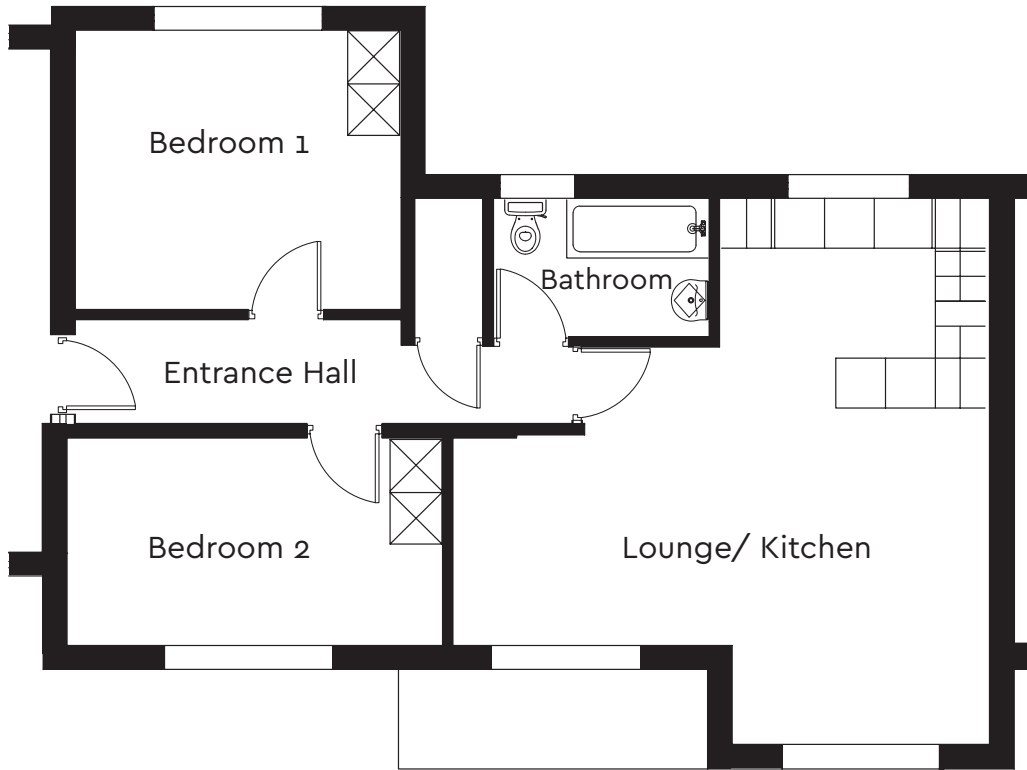
# FIRST FLOOR FLAT 3



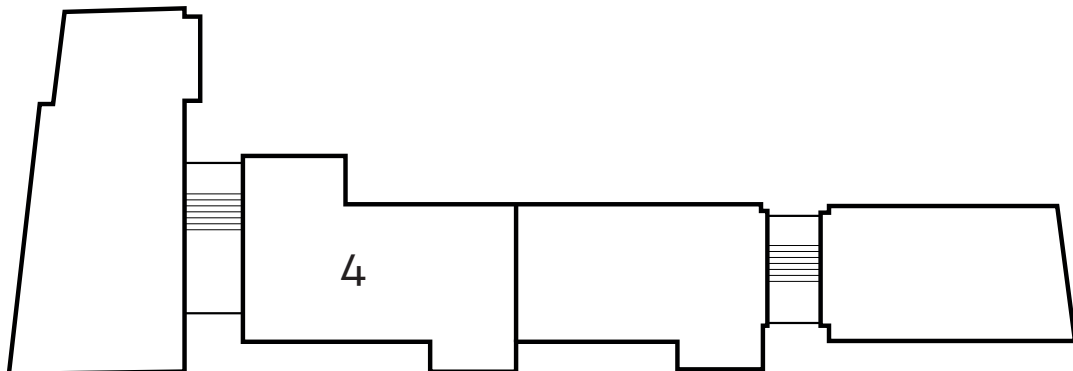
Master bedroom	5.21m x 2.71m	17' 1 x 18' 9
Ensuite	2.61m x 1.81m	8' 6 x 5' 9
Bedroom 2	3.09m x 3.83m	10' 1 x 12' 56
Bedroom 3	2.57m x 3.83m	8' 4 x 12' 6
Kitchen/Lounge	6.88m x 6.08m	22' 6 x 19' 9
Bathroom	1.84m x 2.43m	6' 3 x 8' 0



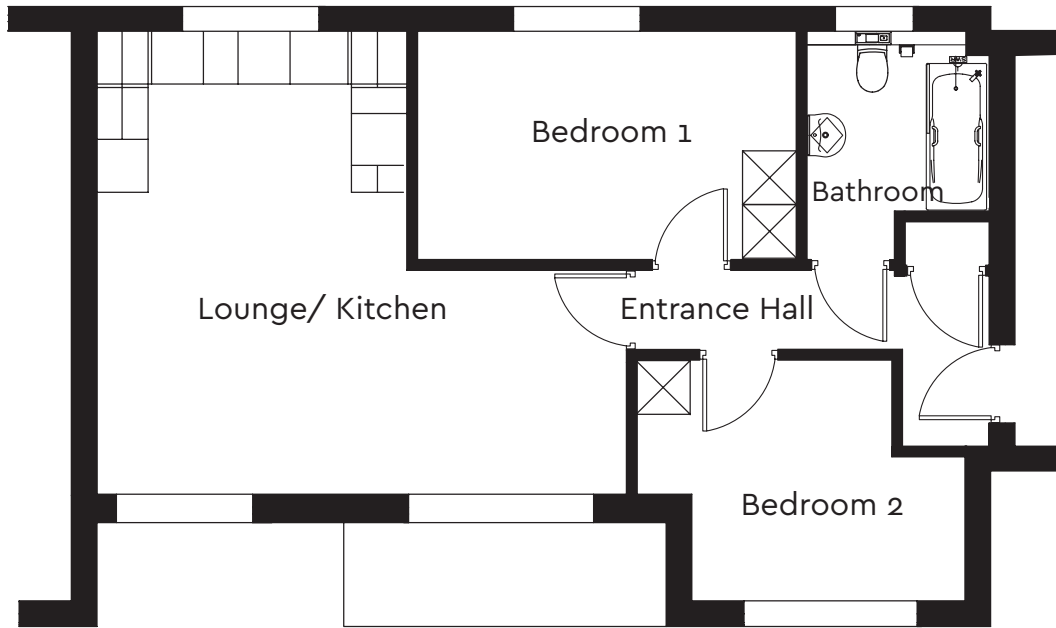
FIRST FLOOR  
FLAT 4



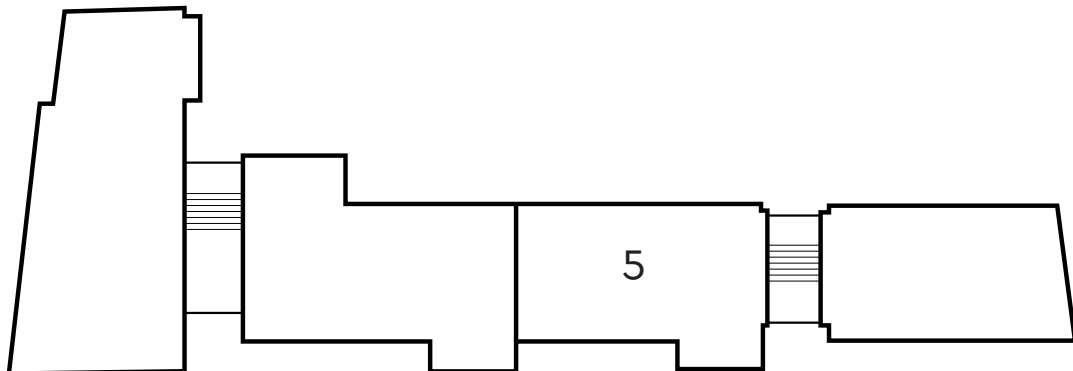
Bedroom 1	3.92m x 3.33m	12' 9 x 10' 9
Bedroom 2	4.52m x 2.50m	14' 8 x 8' 2
Kitchen/Lounge	6.46m x 6.57m	12' 2 x 21' 5
Bathroom	2.59m x 1.66m	8'5 x 5' 4



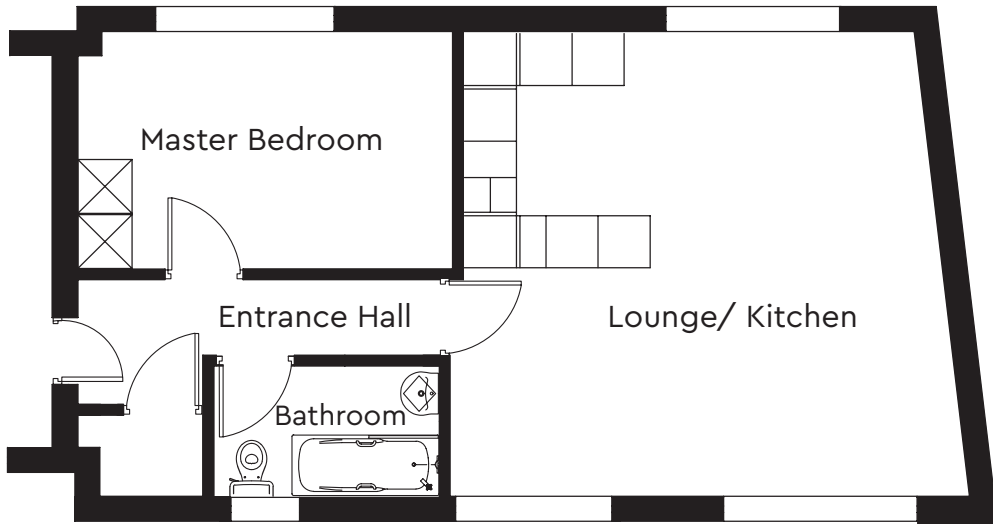
FIRST FLOOR  
FLAT 5



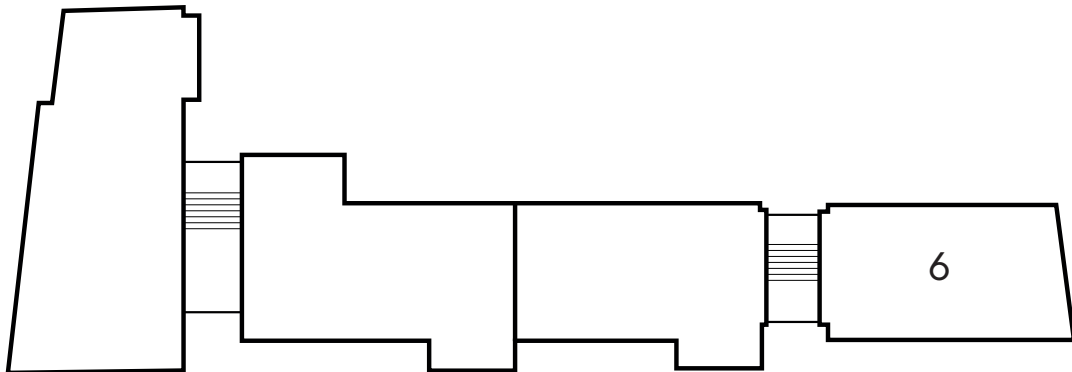
Bedroom 1	4.37m x 2.63m	14' 3 x 8' 6
Bedroom 2	2.77m x 3.78m	9' 1 x 12' 4
Kitchen/Lounge	6.11m x 5.34m	20' 0 x 17' 5
Bathroom	2.59m x 1.66m	8' 5 x 5' 4



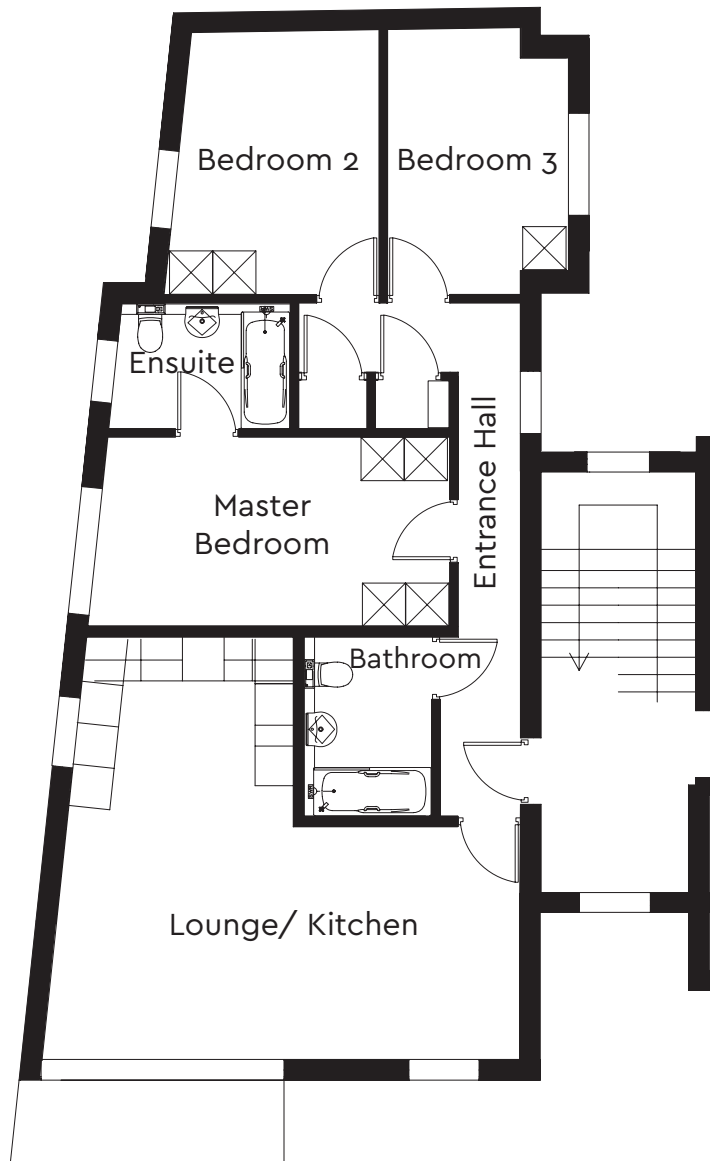
FIRST FLOOR  
FLAT 6



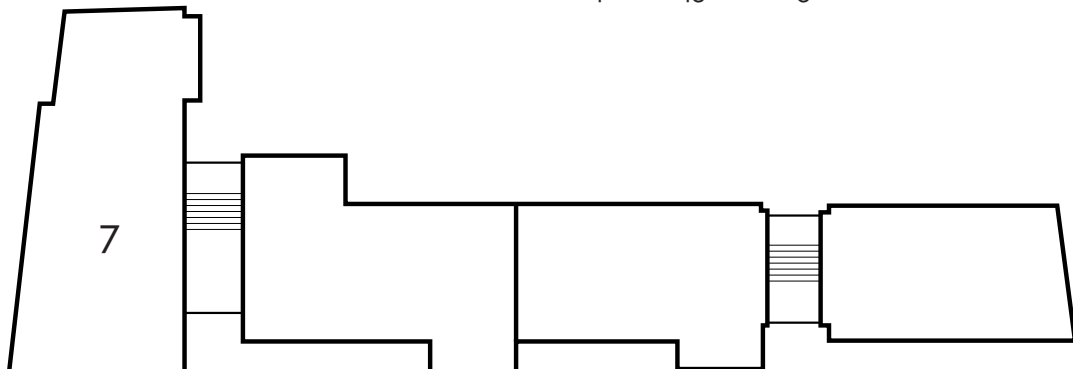
Master Bedroom	4.31m x 2.73m	14' 1 x 8' 9
Kitchen/Lounge	5.98m x 5.35m	19' 6 x 17' 5
Bathroom	2.59m x 1.66m	8'5 x 5' 4



## SECOND FLOOR FLAT 7

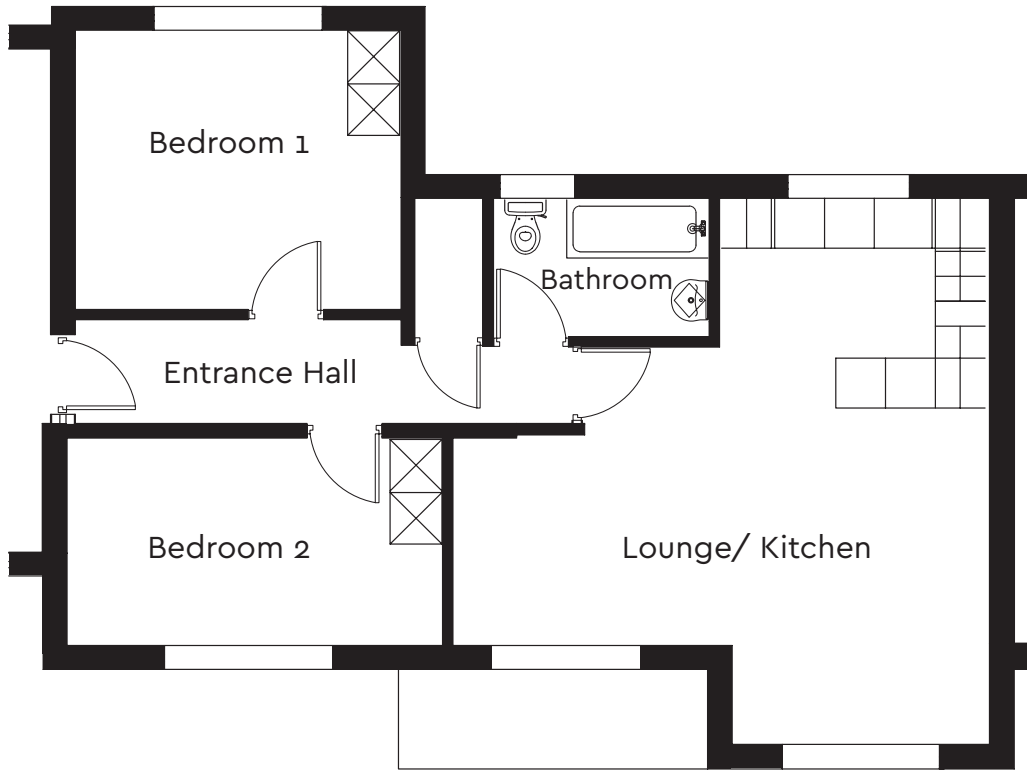


Master bedroom	5.21m x 2.71m	17' 1 x 18' 9
Ensuite	2.61m x 1.81m	8' 6 x 5' 9
Bedroom 2	3.09m x 3.83m	10' 1 x 12' 56
Bedroom 3	2.57m x 3.83m	8' 4 x 12' 6
Kitchen/Lounge	6.88m x 6.08m	22' 6 x 19' 9
Bathroom	1.84m x 2.43m	6' 3 x 8' 0

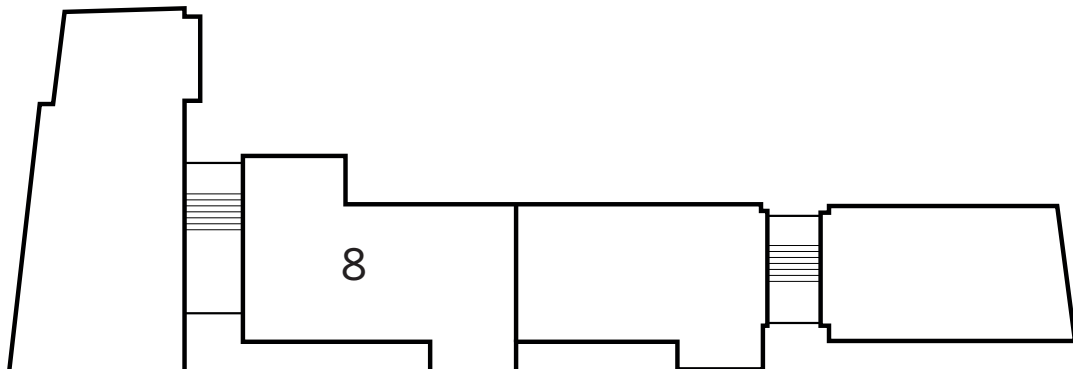




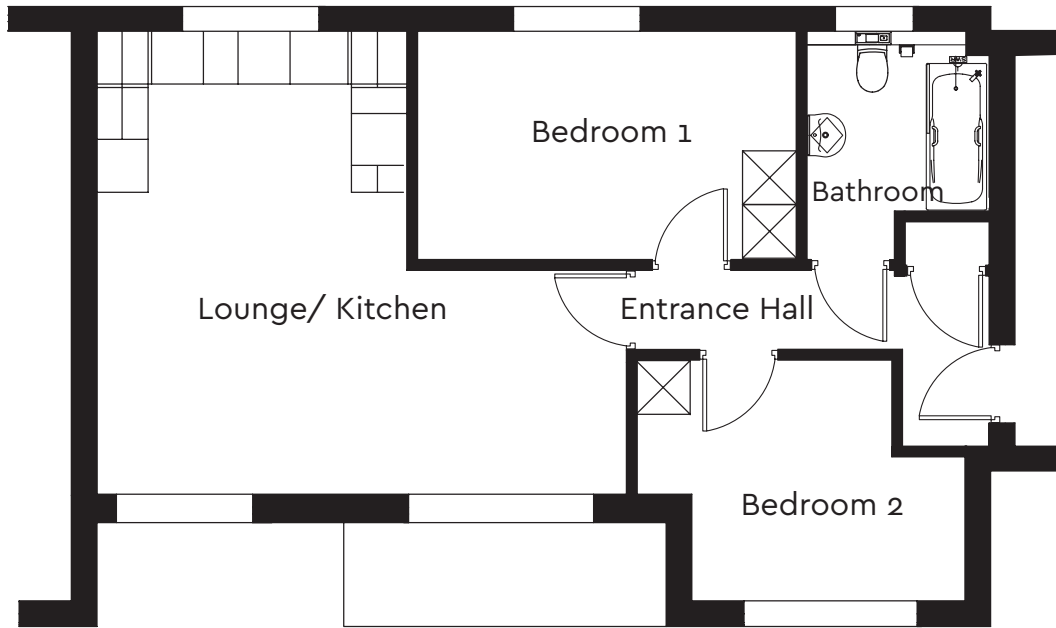
# SECOND FLOOR FLAT 8



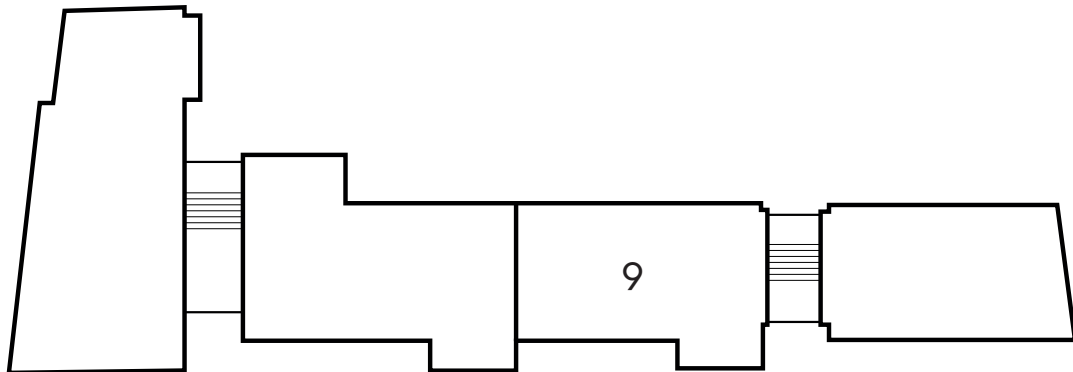
Bedroom 1	3.92m x 3.33m	12' 9 x 10' 9
Bedroom 2	4.52m x 2.50m	14' 8 x 8' 2
Kitchen/Lounge	6.46m x 6.57m	12' 2 x 21' 5
Bathroom	2.59m x 1.66m	8'5 x 5' 4



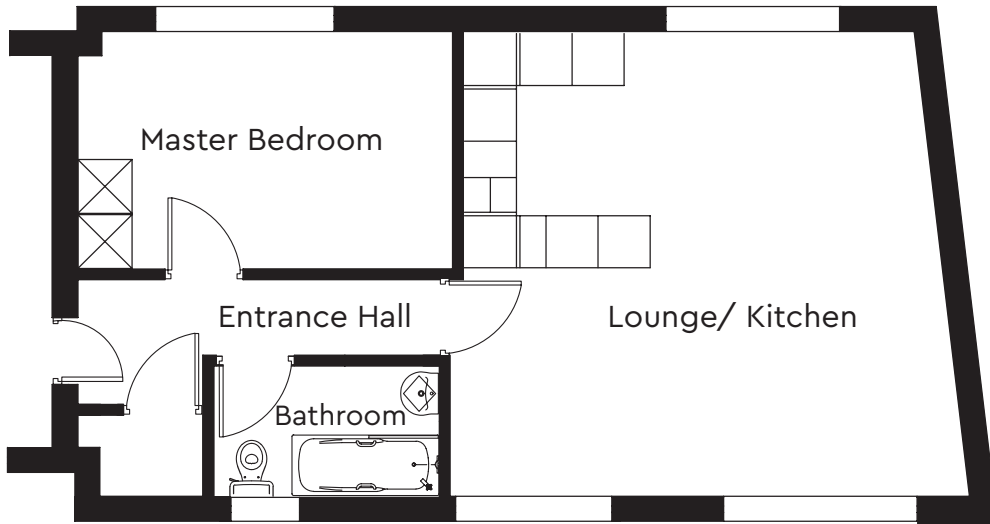
# SECOND FLOOR FLAT 9



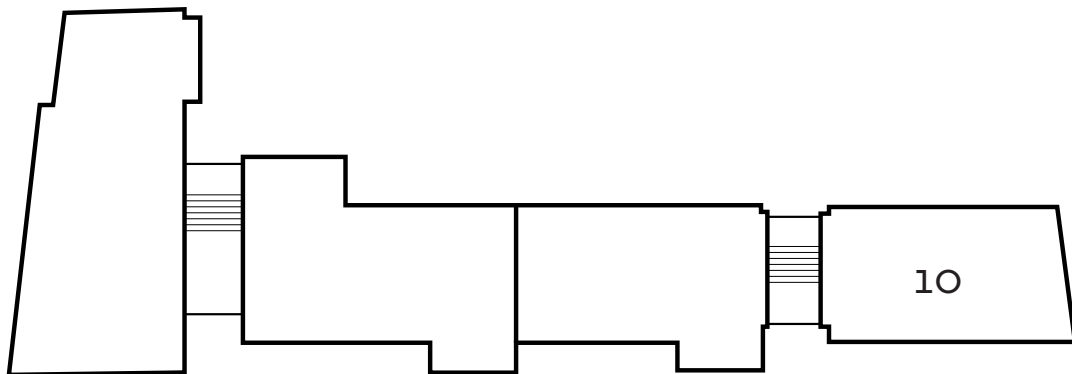
Bedroom 1	4.37m x 2.63m	14' 3 x 8' 6
Bedroom 2	2.77m x 3.78m	9' 1 x 12' 4
Kitchen/Lounge	6.11m x 5.34m	20' 0 x 17' 5
Bathroom	2.59m x 1.66m	8'5 x 5' 4



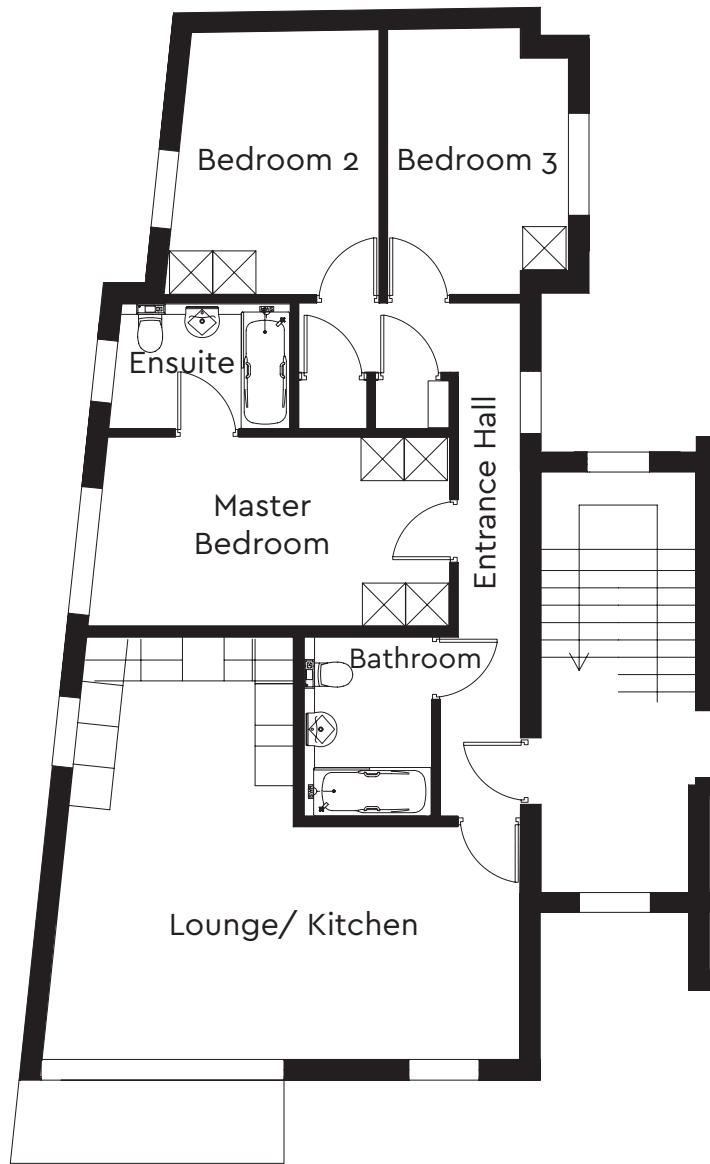
SECOND FLOOR  
FLAT 10



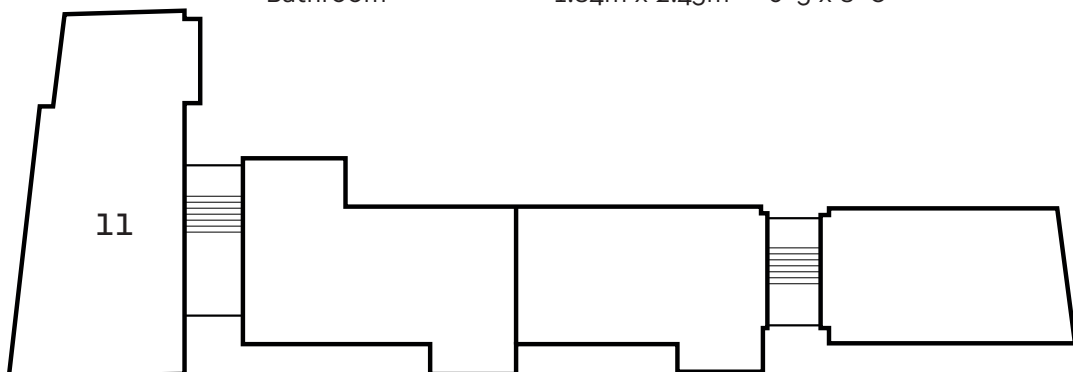
Master Bedroom	4.31m x 2.73m	14' 1 x 8' 9
Kitchen/Lounge	5.98m x 5.35m	19' 6 x 17' 5
Bathroom	2.59m x 1.66m	8' 5 x 5' 4



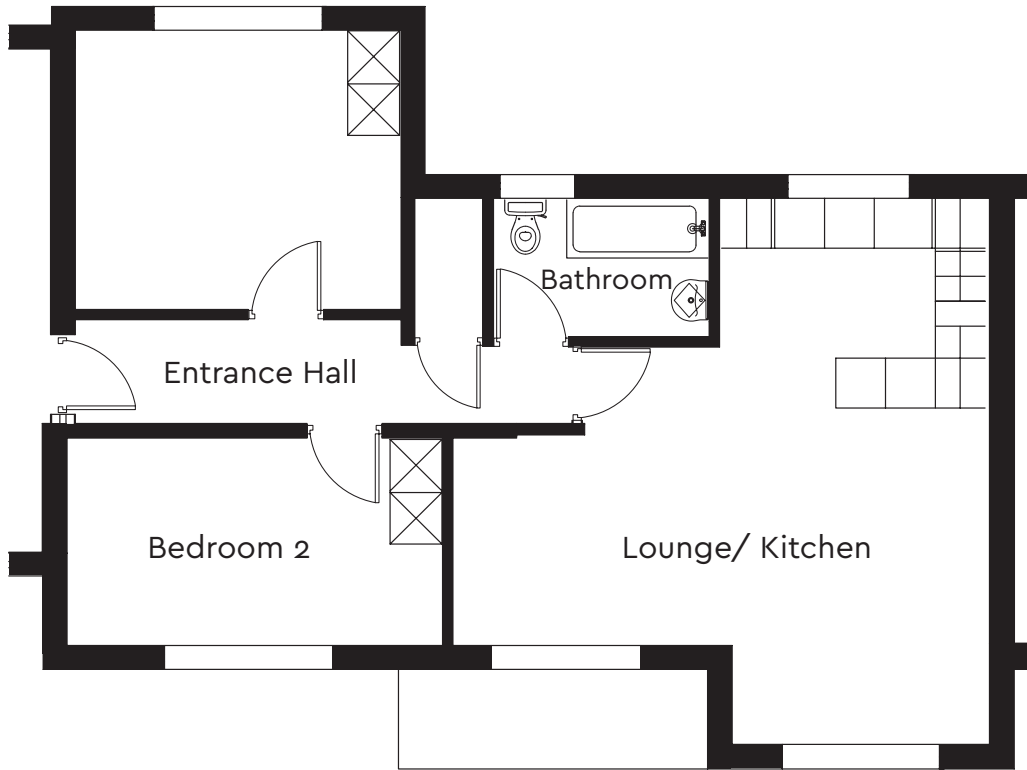
# THIRD FLOOR FLAT 11



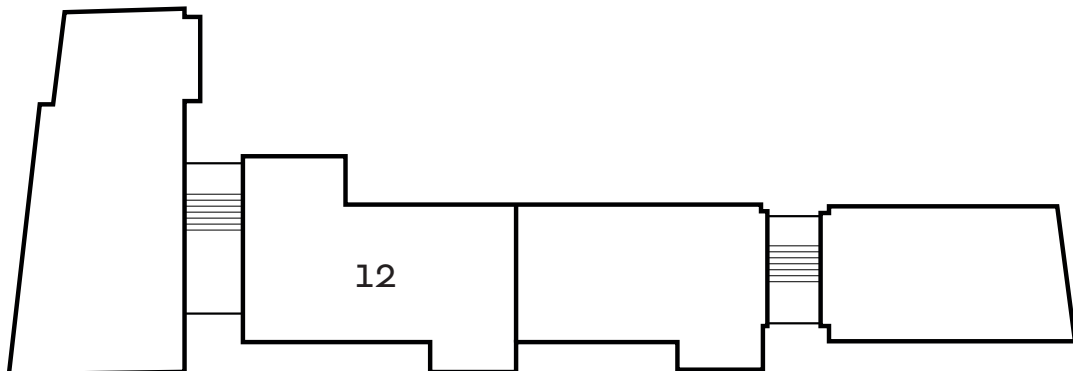
Master bedroom	5.21m x 2.71m	17' 1 x 18' 9
Ensuite	2.61m x 1.81m	8' 6 x 5' 9
Bedroom 2	3.09m x 3.83m	10' 1 x 12' 56
Bedroom 3	2.57m x 3.83m	8' 4 x 12' 6
Kitchen/Lounge	6.88m x 6.08m	22' 6 x 19' 9
Bathroom	1.84m x 2.43m	6' 3 x 8' 0



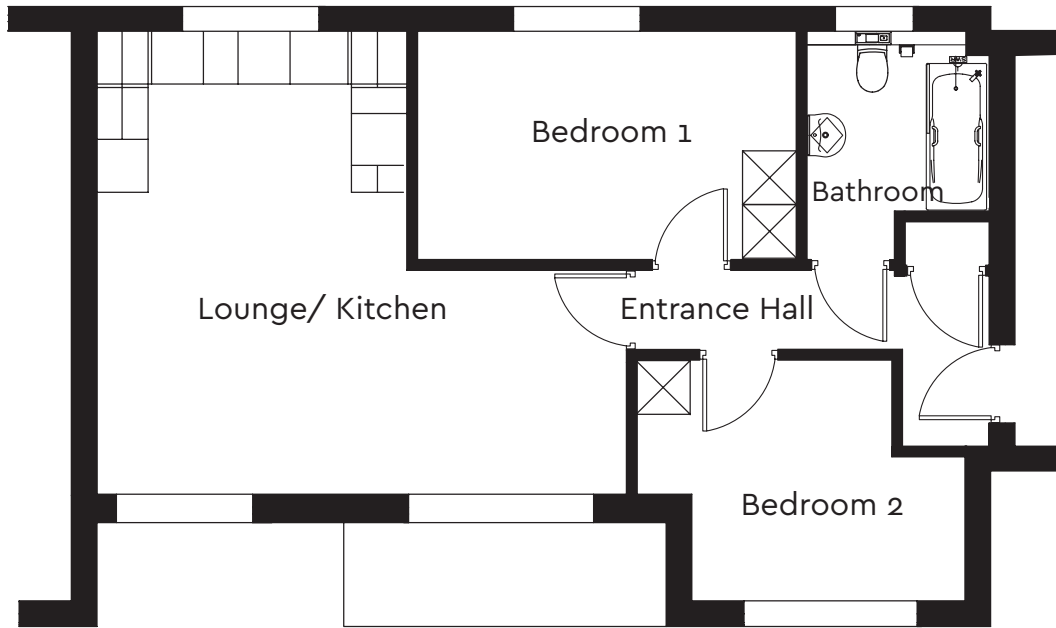
THIRD FLOOR  
FLAT 12



Bedroom 1	3.92m x 3.33m	12' 9 x 10' 9
Bedroom 2	4.52m x 2.50m	14' 8 x 8' 2
Kitchen/Lounge	6.46m x 6.57m	12' 2 x 21' 5
Bathroom	2.59m x 1.66m	8'5 x 5' 4



THIRD FLOOR  
FLAT 13



Bedroom 1	4.37m x 2.63m	14' 3 x 8' 6
Bedroom 2	2.77m x 3.78m	9' 1 x 12' 4
Kitchen/Lounge	6.11m x 5.34m	20' 0 x 17' 5
Bathroom	2.59m x 1.66m	8'5 x 5' 4

